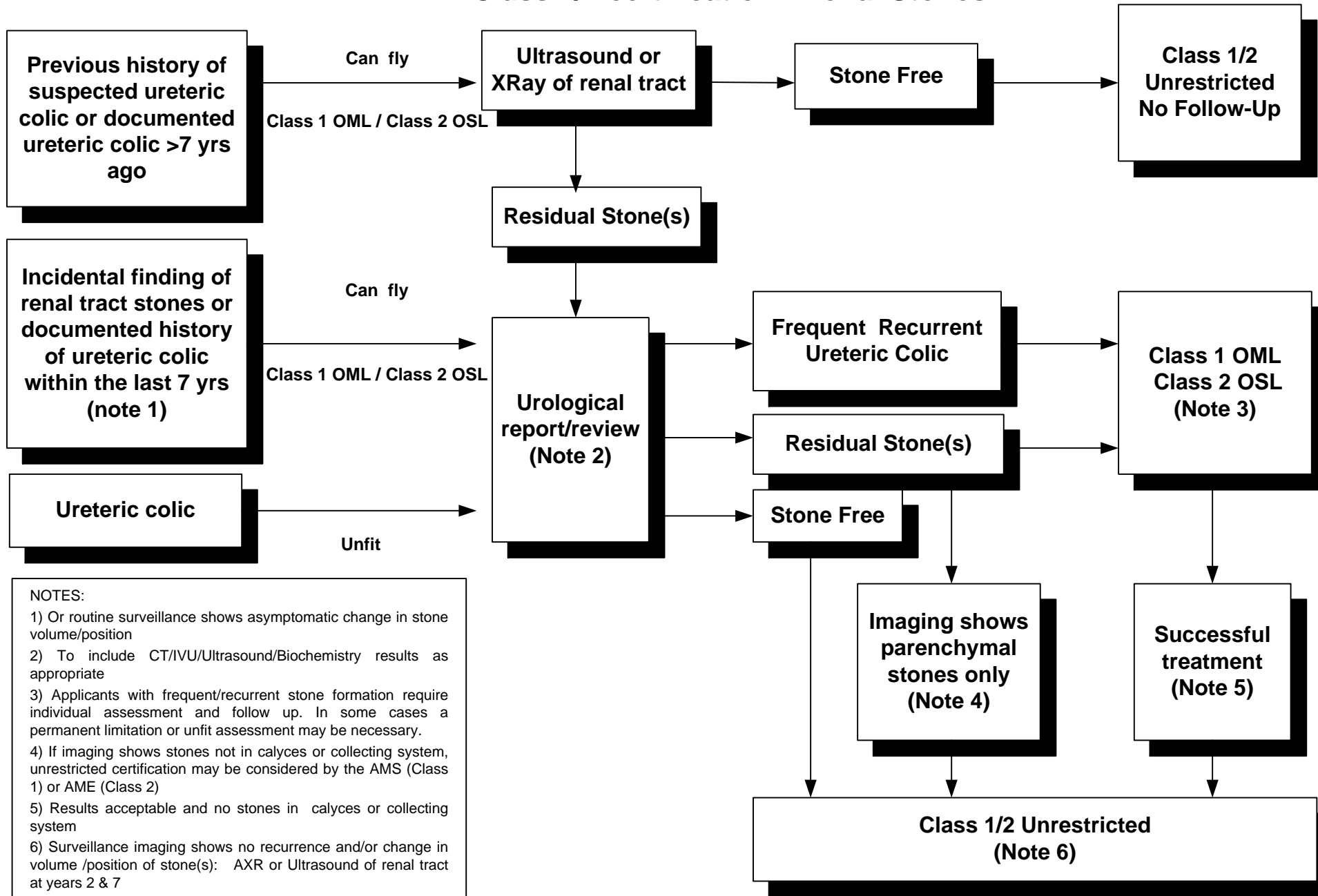


Class 1/2 certification - Renal Stones



NOTES:

- 1) Or routine surveillance shows asymptomatic change in stone volume/position
- 2) To include CT/IVU/Ultrasound/Biochemistry results as appropriate
- 3) Applicants with frequent/recurrent stone formation require individual assessment and follow up. In some cases a permanent limitation or unfit assessment may be necessary.
- 4) If imaging shows stones not in calyces or collecting system, unrestricted certification may be considered by the AMS (Class 1) or AME (Class 2)
- 5) Results acceptable and no stones in calyces or collecting system
- 6) Surveillance imaging shows no recurrence and/or change in volume /position of stone(s): AXR or Ultrasound of renal tract at years 2 & 7

PLEASE PRINT THIS DOCUMENT AND TAKE TO YOUR SPECIALIST ADVISOR